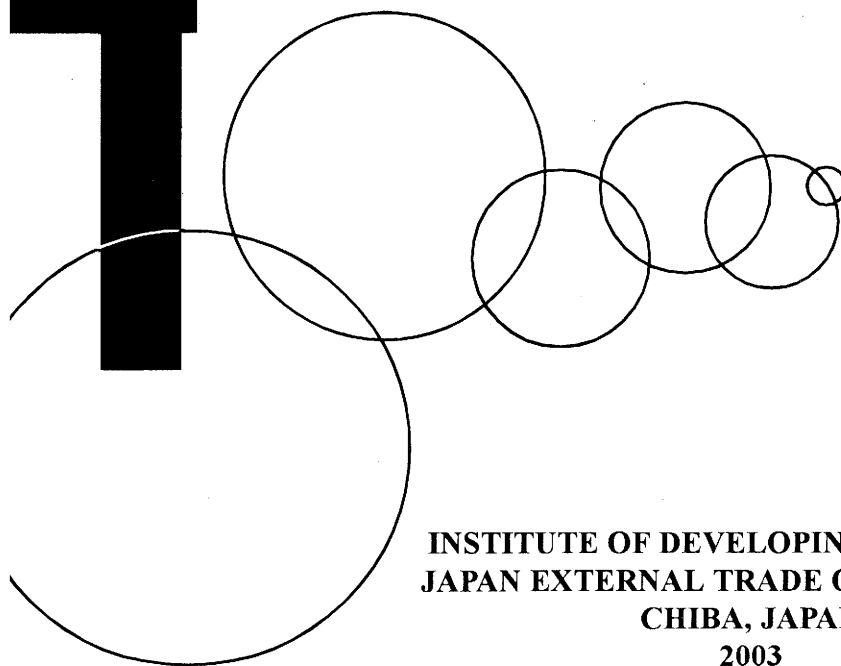




ASEDP NO. 6

**REGIONAL AUTONOMY AND  
SOCIO-ECONOMIC DEVELOPMENT  
IN INDONESIA  
- A MULTIDIMENSIONAL ANALYSIS -**

Edited by  
**T. A. Legowo  
and  
Muneo Takahashi**



**INSTITUTE OF DEVELOPING ECONOMIES  
JAPAN EXTERNAL TRADE ORGANIZATION  
CHIBA, JAPAN  
2003**

**REGIONAL AUTONOMY AND  
SOCIO-ECONOMIC DEVELOPMENT  
IN INDONESIA  
- A MULTIDIMENSIONAL ANALYSIS -**

**Edited by  
T.A. Legowo  
and  
Muneo Takahashi**

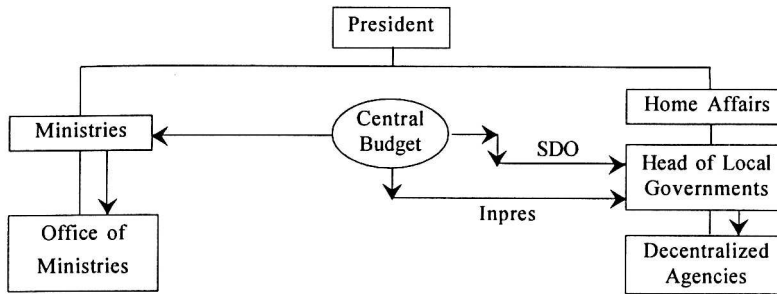
**INSTITUTE OF DEVELOPING ECONOMIES  
JAPAN EXTERNAL TRADE ORGANIZATION  
CHIBA, JAPAN  
2003**

## ERRATA

Figure 1 of the page 118 and Table 5 of the page 223 should be as follows

**Figure 1**

### Structure of Government and Intergovernmental Fiscal Relation



**Table 5**

### Establishment of New Municipalities in Indonesia from 1980 to 2002

| Name of New Municipalities<br>(Province's Name) | Year 1 <sup>(1)</sup> |                         | Year 2 <sup>(2)</sup> |                         |
|---|-----------------------|-------------------------|-----------------------|-------------------------|
|   | Year                  | Law No.                 | Year                  | Law No.                 |
| 1. Batam (Riau→Riau Islands)                    |                       |                         | 1983                  | PP No. 34               |
| 2. Bitung (North Sulawesi)                      | 1975                  | PP No. 4 <sup>(3)</sup> | 1990                  | UU No. 7 <sup>(4)</sup> |
| 3. Denpasar (Bali)                              | 1978                  | PP No. 20               | 1992                  | UU No. 1                |
| 4. Tangerang (West Java→Banten)                 | 1981                  | PP No. 50               | 1993                  | UU No. 2                |
| 5. Mataram (West Nusa Tenggara)                 | 1978                  | PP No. 21               | 1993                  | UU No. 4                |
| 6. Jayapura (Irian Jaya)                        | 1979                  | PP No. 26               | 1993                  | UU No. 6                |
| 7. Palu (Central Sulawesi)                      | 1978                  | PP No. 18               | 1994                  | UU No. 4                |
| 8. Kendari (Southeast Sulawesi)                 | 1978                  | PP No. 19               | 1995                  | UU No. 6                |
| 9. Kupang (East Nusa Tenggara)                  | 1978                  | PP No. 22               | 1996                  | UU No. 5                |
| 10. Bekasi (West Java)                          | 1981                  | PP No. 48               | 1996                  | UU No. 9                |
| 11. Tarakan (East Kalimantan)                   | 1981                  | PP No. 47               | 1997                  | UU No. 29               |
| 12. Banjarbaru (South Kalimantan)               | 1975                  | PP No. 26               | 1999                  | UU No. 9                |
| 13. Ternate (Maluku)                            | 1981                  | PP No. 45               | 1999                  | UU No. 11               |
| 14. Metro (Lampung)                             | 1986                  | PP No. 34               | 1999                  | UU No. 12               |
| 15. Depok (West Java)                           | 1981                  | PP No. 43               | 1999                  | UU No. 15               |
| 16. Cilegon (West Java→Banten)                  | 1986                  | PP No. 40               | 1999                  | UU No. 15               |
| 17. Dumai (Riau)                                | 1979                  | PP No. 8                | 1999                  | UU No. 16               |
| 18. Sorong (Irian Jaya)                         | 1996                  | PP No. 31               | 1999                  | UU No. 45               |
| 19. Bontang (East Kalimantan)                   | 1989                  | PP No. 20               | 1999                  | UU No. 47               |
| 20. Batam (Riau→Riau Islands) <sup>(5)</sup>    |                       |                         | 1999                  | UU No. 53               |
| 21. Lhokseumawe (Aceh→N.A.D.)                   | 1986                  | PP No. 32               | 2001                  | UU No. 2                |
| 22. Langsa (Aceh→N.A.D.)                        | 1991                  | PP No. 64               | 2001                  | UU No. 3                |
| 23. Padang Sidempuan (West Sumatra)             | 1982                  | PP No. 32               | 2001                  | UU No. 4                |
| 24. Tanjung Pinang (Riau→Riau Islands)          | 1982                  | PP No. 31               | 2001                  | UU No. 5                |
| 25. Prabumulih (South Sumatra)                  | 1982                  | PP No. 18               | 2001                  | UU No. 6                |
| 26. Lubuk Linggau (South Sumatra)               | 1993                  | PP No. 12               | 2001                  | UU No. 7                |
| 27. Pagar Alam (South Sumatra)                  | 1991                  | PP No. 63               | 2001                  | UU No. 8                |
| 28. Cimahi (West Java)                          | 1975                  | PP No. 29               | 2001                  | UU No. 9                |
| 29. Tasikmalaya (West Java)                     | 1976                  | PP No. 22               | 2001                  | UU No. 10               |
| 30. Batu (East Java)                            | 1993                  | PP No. 12               | 2001                  | UU No. 11               |
| 31. Singkawang (West Kalimantan)                | 1981                  | PP No. 49               | 2001                  | UU No. 12               |
| 32. Bau-Bau (Southeast Kalimantan)              | 1981                  | PP No. 40               | 2001                  | UU No. 13               |
| 33. Palopo (South Sulawesi)                     | 1986                  | PP No. 42               | 2002                  | UU No. 11               |
| 34. Pariaman (West Sumatra)                     | 1986                  | PP No. 33               | 2002                  | UU No. 12               |
| 35. Bima (West Nusa Tenggara)                   | 1998                  | PP No. 77               | 2002                  | UU No. 13               |
| 36. Banjar (West Java)                          | 1991                  | PP No. 54               | 2002                  | UU No. 27               |

Source: Indonesia. *Sekretariat Negara...* and *Himpunan Peraturan Perundang-undangan...*

<sup>(1)</sup> The year of promotion to *kotif*

<sup>(2)</sup> The year of promotion to municipality

<sup>(3)</sup> PP or *peraturan pemerintah* means government regulation

<sup>(4)</sup> UU or *undang-undang* means law

<sup>(5)</sup> Batam was designated as *kotamadya* in 1983, even without an assembly of its own. Only in 1999, pursuant to Article 18 of UU 53/1999, when it was decided to form a local assembly.

## **LIST OF CONTRIBUTORS**

### **Ignasius Ismanto**

Research Staff, Department of Politics and Social Change, Centre for Strategic and International Studies (CSIS)

### **T.A. Legowo**

Head, Department of Politics and Social Change, Centre for Strategic and International Studies (CSIS)

### **P. Agung Pambudhi**

Executive Director, The Regional Autonomy Watch (KPPOD)

### **Titik Anas**

Research Staff, Department of Economics, Centre for Strategic and International Studies (CSIS)

### **Yose Rizal Damuri**

Research Staff, Department of Economics, Centre for Strategic and International Studies (CSIS)

### **Raymond Atje**

Research Staff, Department of Economics, Centre for Strategic and International Studies (CSIS)

### **Medelina K. Hendytio**

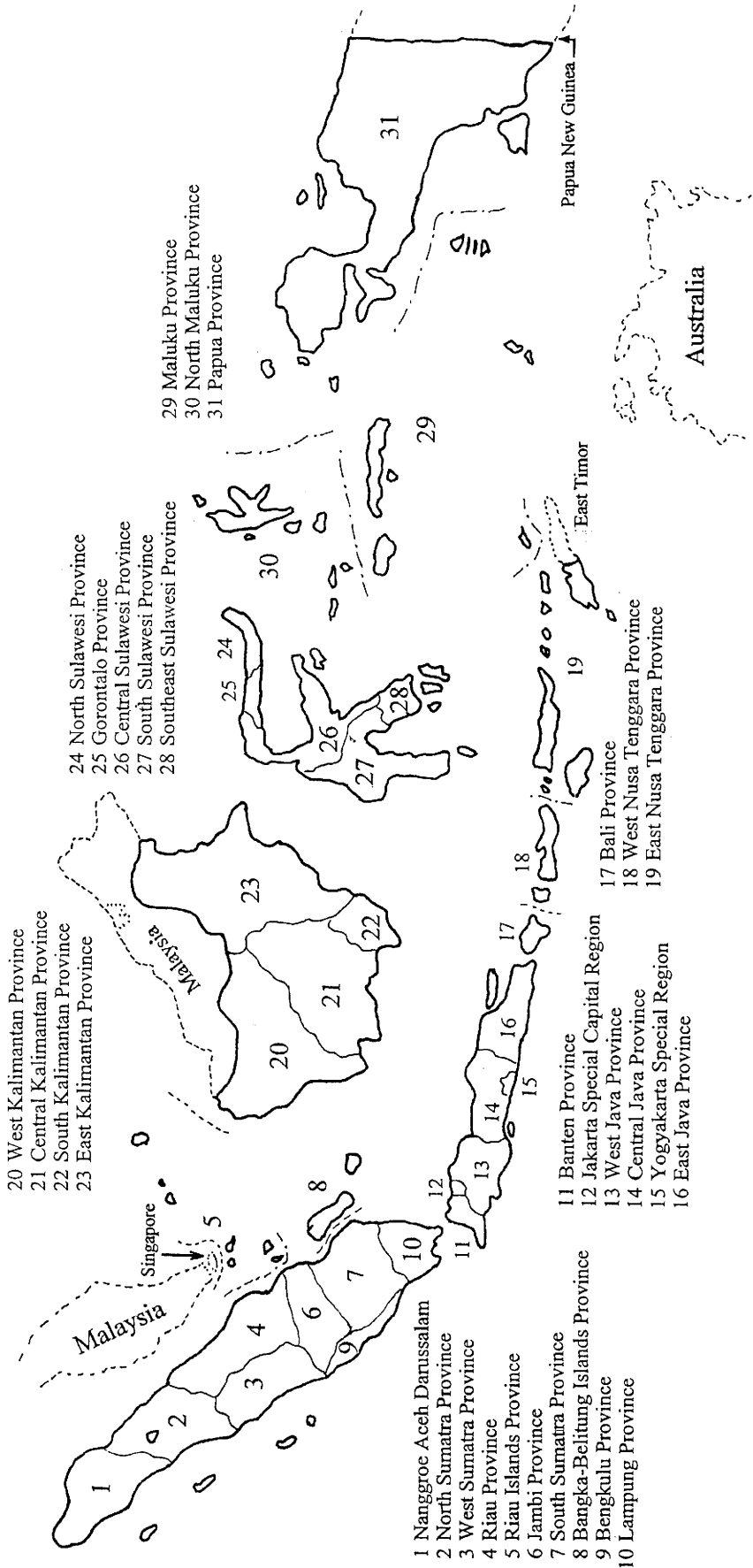
Research Staff, Department of Politics and Social Change, Centre for Strategic and International Studies (CSIS)

### **Muneo Takahashi**

Senior Research Fellow, Jakarta, The Institute of Developing Economies, Japan External Trade Organization (IDE- JETRO)

# Map of Indonesia

(As of the end of 2002)



# CONTENTS

|                             |      |
|-----------------------------|------|
| <b>ACKNOWLEDGEMENTS</b>     | iii  |
| <b>ABSTRACT</b>             | iv   |
| <b>LIST OF CONTRIBUTORS</b> | viii |
| <b>MAP OF INDONESIA</b>     | ix   |
| <b>TABLE OF CONTENTS</b>    | x    |

## CHAPTER I

### **Decentralization and Democratization in Indonesia's Political Changes**

|                                     |    |
|-------------------------------------|----|
| <i>Ignasius Ismanto</i>             | 1  |
| 1. Introduction                     | 1  |
| 2. Background                       | 2  |
| 3. Deepening State Authoritarianism | 9  |
| 4. The Challenge of Changes         | 17 |
| 5. Conclusion                       | 29 |
| References                          | 30 |

## CHAPTER II

### **Legal Framework and Problems on the 1999 Decentralization Program in Indonesia**

|   |    |
|---|----|
| <i>T.A. Legowo</i>                                    | 35 |
| 1. Introduction                                       | 35 |
| 2. Political Complexity of Regional Autonomy          | 36 |
| 2.1. Pressures from the Society and Regions           | 37 |
| 2.2. Problems behind the Smooth Process of Law Making | 40 |
| 3. Political and Legal Implications                   | 42 |
| 3.1. Main Provisions                                  | 43 |

|   |    |
|---|----|
| 3.2. New Structure of Central-Regional Relationship   | 48 |
| 3.3. Requirements of Related Laws and Regulations     | 50 |
| 4. Problems on Implementation                         | 53 |
| 4.1. Government's Ambiguity and Political Uncertainty | 53 |
| 4.2. Preserving or Solving Conflicts?                 | 55 |
| 4.3. Problems of Local Capacity                       | 57 |
| 5. Concluding Notes                                   | 61 |
| References  | 62 |

## CHAPTER III

### Local Economic Regulations

|  |    |
|--|----|
| <i>P. Agung Pambudhi</i>                                       | 65 |
| 1. Introduction  | 65 |
| 2. Picture of Local Economic Regulations                       | 67 |
| 2.1. Local Taxes   | 67 |
| 2.2. Local Retributions/Levies                                 | 68 |
| 2.3. Local Asset Management                                    | 70 |
| 2.4. Local Owned Enterprises                                   | 70 |
| 3. Problems on Revenue Raising Local Regulations               | 71 |
| 3.1. Problem on Law Hierarchy                                  | 74 |
| 3.2. Types of Major Significant Problems of Local Regulations  | 76 |
| 3.2.1. Zero Benefit for Retribution/Levy Paying Party          | 76 |
| 3.2.2. Tariff Barriers on the Movement of Goods Across Regions | 77 |
| 3.2.3. Non-Tariff Barriers                                     | 77 |
| 3.2.4. Inspection Requirements                                 | 78 |
| 3.2.5. Double Taxation   | 78 |
| 3.2.6. Third Party Contribution                                | 80 |
| 3.2.7. Loading/Unloading and Cargo Haulage Retributions/Levies | 80 |
| 3.2.8. Standard of Service                                     | 81 |
| 3.2.9. Other Distorting Regulations                            | 81 |
| 4. Causes and Implications                                     | 82 |
| 5. The Challenge   | 83 |
| References   | 85 |

## CHAPTER IV

### Decentralization and Domestic Trade

|  |     |
|--|-----|
| <i>Titik Anas</i>  | 87  |
| 1. Introduction  | 87  |
| 2. Theoretical Framework: Free Trade vs. Protection              | 88  |
| 3. Free Trade: Some Compelling Facts                             | 95  |
| 3.1. Indonesian Trade Liberalization                             | 95  |
| 3.2. The European Union Model                                    | 96  |
| 3.3. The 1997 Intra-regional Trade Deregulations                 | 97  |
| 4. Creeping Protectionism in the Decentralization Era            | 98  |
| 4.1. New Taxes and Charges Impeding Inter-regional Trade         | 100 |
| 4.2. PERDAs Impeding Inter-regional Trade: Selected Case Studies | 102 |
| 4.3. Increasing Demand for Eliminating Such Protections          | 110 |
| 5. Conclusions and Policy Recommendations                        | 112 |
| References   | 113 |

## CHAPTER V

### Indonesia's New Fiscal Relations: Issues and Problems in a More Decentralized Fiscal System

|  |     |
|--|-----|
| <i>Yose Rizal Damuri</i>                           | 115 |
| 1. Introduction                                    | 115 |
| 2. Intergovernmental Fiscal Relations in Indonesia | 117 |
| 2.1. Old Fiscal System                             | 117 |
| 2.2. New Fiscal Relation System                    | 118 |
| 2.2.1. Expenditure Assignment                      | 119 |
| 2.2.2. Revenue Assignment                          | 121 |
| 2.2.3. Intergovernmental Transfer                  | 122 |
| 2.2.4. Regional Loans                              | 125 |
| 3. Impacts of Decentralization on Budget           | 126 |
| 3.1. Impacts on Central Government's Budget        | 126 |
| 3.2. Impacts on Regional Government's Budget       | 130 |
| 4. Issues and Problems on Fiscal Decentralization  | 132 |
| 4.1. Problems on Expenditure Assignment            | 132 |



|   |     |
|---|-----|
| 4.2. Vertical and Horizontal Balance                                | 135 |
| 4.2.1. Revenue and Responsibilities:<br>Do They Match Each Other?   | 135 |
| 4.2.2. Horizontal Imbalance: Is the Revenue<br>Distributed Equally? | 138 |
| 4.3. Local Own Revenue: Greater Independency?                       | 141 |
| 5. Conclusion: Prospects of Fiscal Decentralization                 | 143 |
| References  | 145 |

## CHAPTER VI

### **Investment in a Decentralized Indonesia**

|  |     |
|--|-----|
| <i>Raymond Atje</i>                                  | 147 |
| 1. Introduction                                      | 147 |
| 2. A Review of Economic Development Since 1980       | 149 |
| 3. Spatial Concentration of Manufacturing Production | 154 |
| 4. Implications to Local Economic Development        | 158 |
| 5. Entrepreneurs to the Rescue?                      | 162 |
| 6. Conclusion  | 167 |
| References   | 168 |

## CHAPTER VII

### **Regional Autonomy: Its Social and Cultural Impact**

|  |     |
|--|-----|
| <i>Medelina K. Hendytio</i>                                | 174 |
| 1. Introduction  | 174 |
| 2. On Authority  | 178 |
| 2.1. Relationship between Local and Central<br>Governments | 178 |
| 2.2. Power Struggle Over Authority                         | 181 |
| 2.3. Inconsistency of Laws and Regulations                 | 183 |
| 2.4. Employment  | 184 |
| 2.5. Public Participation                                  | 186 |
| 3. Economic Aspect   | 190 |
| 3.1. Management of Natural Resources                       | 190 |
| 3.2. Local Independence                                    | 192 |
| 3.3. Local Development/Expansion                           | 194 |

|   |     |
|---|-----|
| 4. Social and Cultural Aspect                           | 195 |
| 4.1. Appreciation of Local Culture                      | 195 |
| 4.2. Social Conflict                                    | 196 |
| 4.3. Local Isolation                                    | 199 |
| 4.4. Status of Traditional Village ( <i>Desa Adat</i> ) | 199 |
| 4.5. Traditional Bodies and Customs                     | 203 |
| 5. Concluding Remarks                                   | 206 |
| References  | 208 |

## CHAPTER VIII

### Urbanization and Population Distribution Changes in the Age of Decentralization: A Comparative Study between Indonesia and Japan

|  |     |
|--|-----|
| <i>Muneo Takahashi</i>   | 210 |
| 1. Introduction  | 210 |
| 2. Urbanization Seen from Two Urbanization Indices   | 213 |
| 2.1. Urbanization in Indonesia Seen from the Ratio of Urban <i>Desa's</i> Population                 | 213 |
| 2.2. Several Examples of the Speed of Urbanization in Indonesia                                      | 216 |
| 2.3. Urbanization in Japan Seen from the Ratio of DID's Population                                   | 217 |
| 3. Urbanization Seen from the Ratio of Population of Municipalities/Cities                           | 220 |
| 3.1. Establishment of New Municipalities in Indonesia  | 220 |
| 3.2. Population Increase of Municipal Areas in Indonesia   | 224 |
| 3.3. Increase of Cities in Japan   | 225 |
| 3.4. Population Increase of City Areas in Japan  | 227 |
| 4. Patterns of Population Distribution and Prospects for Urbanization in the Age of Decentralization | 228 |
| 4.1. Population Distribution and the Formation of Mega Urban Regions in Indonesia                    | 228 |
| 4.2. Population Distribution and the Formation of Mega Urban Regions in Japan                        | 233 |
| 5. Concluding Remarks  | 236 |
| References   | 238 |

|                 |     |
|-----------------|-----|
| <b>GLOSSARY</b> | 243 |
|-----------------|-----|

Institute of Developing Economies,  
Japan External Trade Organization  
3-2-2, Wakaba, Mihama-ku, Chiba-shi,  
Chiba 261-8545, Japan

All rights reserved. Published 2003  
Printed in Indonesia

IDE-JETRO